

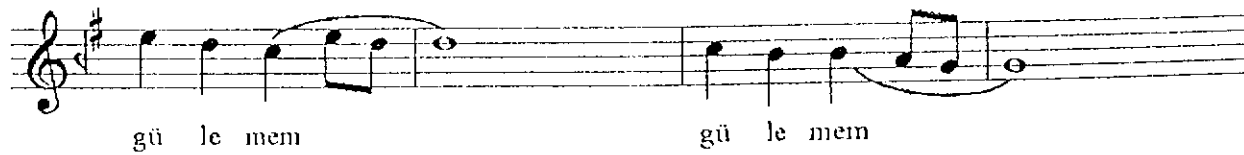
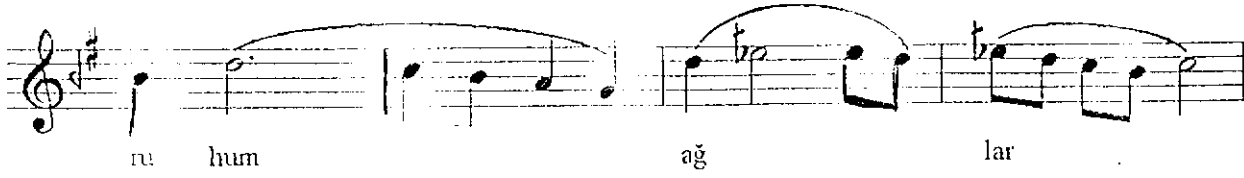
# RAST ŞARKI

## Kalbim Hasretle Dolu

Beste : Dr. Teoman ÖNALDI  
Güfte : Dr. Ahmet Yağar MUMCU  
Ekim 1960 - İstanbul

♩ = 96

Sofyan



## Kalbim Hasretle Dolu - 2

SAZ ..... bu dert ten

The musical notation for the vocal line is written on a single staff in treble clef with a key signature of one sharp (F#). The melody consists of two phrases. The first phrase, marked with a '1' above it, contains six notes: G4 (quarter), A4 (quarter), B4 (quarter), A4-G4 (beamed eighth notes), F#4 (quarter), and E4 (half). The second phrase, marked with a '2' above it, contains seven notes: D4 (half), E4 (quarter), F#4 (quarter), G4 (quarter), A4 (quarter), B4 (quarter), and A4 (half). A slur connects the first two notes of the second phrase. The lyrics 'ah' are written below the staff, aligned with the final note of the second phrase.

kur tu la cak SAZ .....

A musical score for a vocal line in G major, 2/4 time. The melody consists of the notes G4 (quarter), A4-B4 (beamed eighth notes), C5 (quarter), B4-A4 (beamed eighth notes), G4 (quarter), F#4 (quarter), E4 (half), and D4 (half). The lyrics 'ah ah o za man' are written below the notes. A double bar line is followed by the word 'SON'.